



CAPTAIN CURIOSITY'S GUIDE TO THE UNIVERSE

Topic: Primates

EVER WONDER WHAT A PRIMATE IS? The word "primate" is used to describe mammals that are known especially for the use of their hands and thumbs, their intelligence and their social interaction. Apes and monkeys are both examples of primates. Humans are primates too!

EVER WONDER HOW APES ARE DIFFERENT FROM MONKEYS? Though apes and monkeys are both primates, there are three main differences between them: apes are usually bigger than monkeys, apes don't have tails, and apes have arms that are longer than their legs.

EVER WONDER WHERE MONKEYS AND APES LIVE? Most monkeys and apes live in the jungles in Asia and Africa, near the equator where it is warm all year.

EVER WONDER IF APES CAN USE TOOLS LIKE WE CAN? Apes can't use a screwdriver, but they do create and use their own tools! For



GORILLA (APE)



SQUIRREL MONKEY

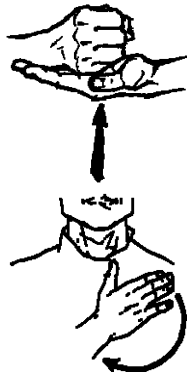
example, they use sticks to catch food and scare other critters away, they use leaves as umbrellas, and they chew up leaves to make sponges to soak up drinking water. Some scientists believe that monkeys can use tools too.

EVER WONDER IF APES CAN TALK TO EACH OTHER? Apes are very social animals; more so even than monkeys. Although they don't use words like you and I, they do use many different sounds and gestures to tell others how they are feeling, to warn others and to call each other. Scientists believe they may even hold hands and hug and kiss their friends!

EVER WONDER HOW APES USE THEIR HANDS IN SPECIAL WAYS? Apes and monkeys are among the few animals that have thumbs like we do. Their thumb allows them to grip and move things more easily.

You Can Do It!

Scientists have been able to teach some apes to use basic sign language to communicate with humans! Can you learn these signs?



HELP: The sign for "help" is made by closing your right hand. Place your right hand on the outstretched palm of your left hand. Raise both hands.

PLEASE: The sign for "please" is made by placing your flat right hand over the center of your chest. Move your hand in a clockwise motion a few times. (From the observer's point of view, use a circular motion towards your left, down, right, and back up.)



CHI MPANZEE (APE)